



6' Bollard Style Bench with Back - Inground Mount.

- Available in 6' and 8' lengths
- Overall Dimensions: 15 1/2' D x 16 5/8" H.
- 2" x 4" Wood style planks.
- 3" x 3" Square x 11 gauge pre-galvanized structural steel tubing.
- All MIG welded frame with zinc plated hardware.
- Available in inground and surface mount.
- One year warranty.
- Some assembly required.

Item #: US 952S

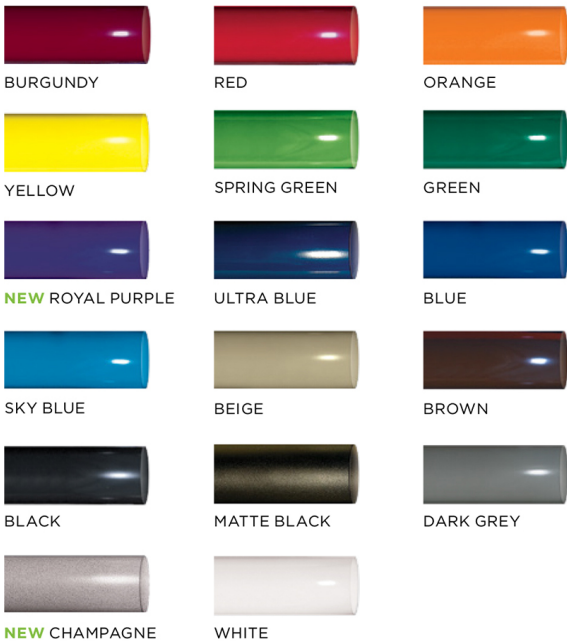


Wood Planks

2" x 10" and 2" x 4" sizes
Rounded Edges
#1 Southern Yellow Pine

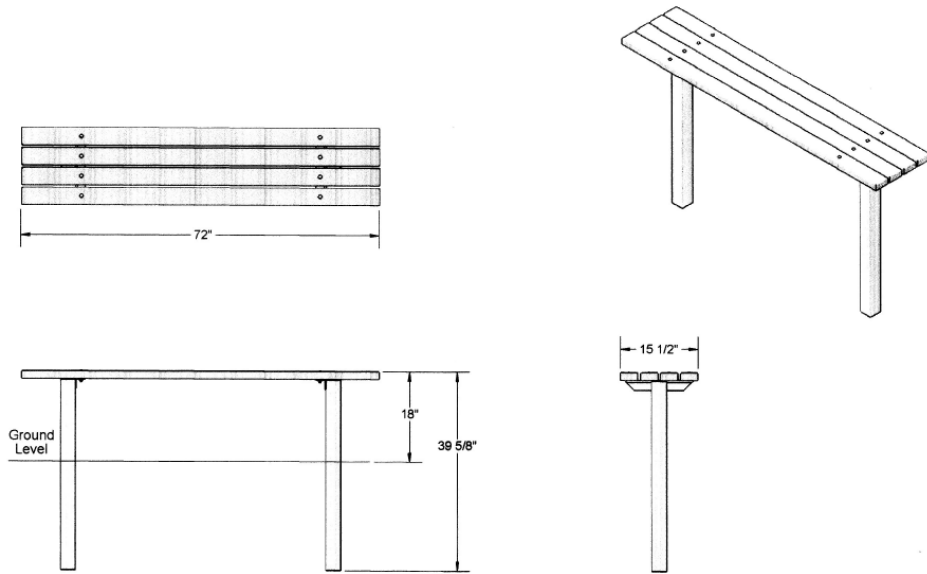
(U) Untreated
(PT) Pressure Treated
Environmentally Friendly ACQ
Kiln Dried Before & After Treatment
(T) Treated Stain
Sealed in Redwood Stain With
Wood Preservative

Standard Powder Coat Colors

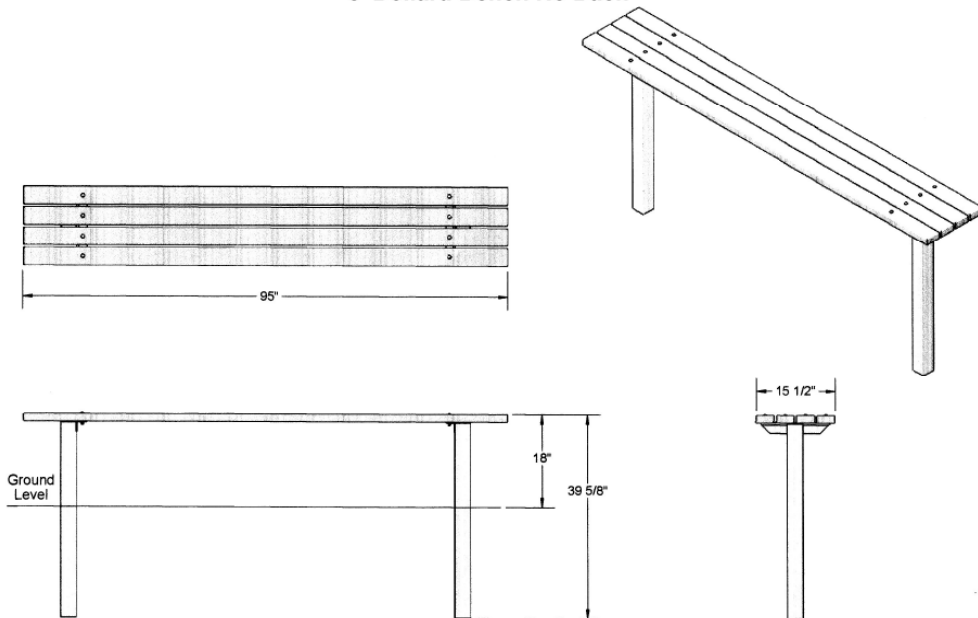


Model Number	Description
US 952S-U6	6' Park Bench, 76 Lbs., 2" x 4" Planks, Untreated Pine.
US 952S-PT6	6' Park Bench, 76 Lbs., 2" x 4" Planks, Treated Pine.
US 952S-T6	6' Park Bench, 76 Lbs., 2" x 4" Planks, Redwood Stained.
US 952S-U8	8' Park Bench, 86 Lbs., 2" x 4" Planks, Untreated Pine.
US 952S-U8	8' Park Bench, 86 Lbs., 2" x 4" Planks, Treated Pine. .
US 952S-PT8	8' Park Bench, 86 Lbs., 2" x 4" Planks, Redwood Stained Pine.

6' Bollard Bench, No Back



8' Bollard Bench No Back



NATIONAL OUTDOOR FURNITURE, INC.

P.O. Box 296 Riverhead, NY 11901
Toll-Free Phone: 1-888-663-4621
Phone: 631-369-9099 Fax: 631-207-8312
Email: nofinc@optonline.net
www.outdoorchaise.com

NATIONAL OUTDOOR FURNITURE, INC.

P.O. Box 325 Pomfret Center, Ct 06259
Toll-Free Phone: 1-888-516-8873
Phone: 1-860-974-9996 Fax: 516-706-1901
Email: nofinc@earthlink.net
www.outdoorchaise.com