



4' and 6' Wood Picnic Table - Inground Mount.

- 162 - 218 Lbs.
- 4' Overall Dimensions: 48"L x 65"W x 30"H..
- 4" x 4" Square main post with 3" x 3" square arm posts.
- Zinc or galvanized plate hardware.
- Zinc coated, powder coated galvanized frame.
- Available in 2" x 10" Untreated Pine, Treated Pine and Redwood Stained planks. Without umbrella hole.
- Available in surface mount and inground mount.
- Some assembly required.

NOF# US 337-6

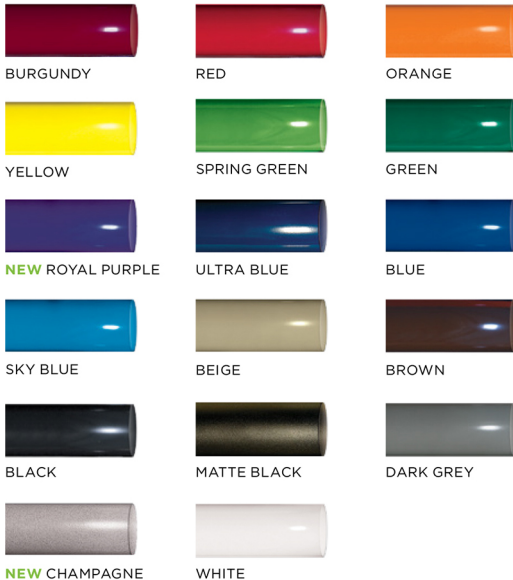


Wood Planks

2" x 10" and 2" x 4" sizes
Rounded Edges
#1 Southern Yellow Pine

(U) Untreated
(PT) Pressure Treated
Environmentally Friendly ACQ
Kiln Dried Before & After Treatment
(T) Treated Stain
Sealed in Redwood Stain With
Wood Preservative

Standard Powder Coat Colors



Model Number	Description
US 337S-U4	4 Ft. Table, 2" x 10" Planks,, Untreated Pine, Inground Mount.
US 337S-PT4	4 Ft. Table, 2" x 10" Planks, Treated Pine Inground Mount.
US 33S-T4	4 Ft. Table, 2" x 10" Planks, Redwood Stain, Inground Mount.
US 337S-U6	6 Ft. Table, 2" x 10" Planks, Untreated Pine Inground Mount.
US 337S-PT6	6 Ft. Table, 2" x 10" Planks, Treated Pine, Inground Mount.
US 337S-T6	6 Ft. Table, 2" x 10" Planks, Redwood Stain, Inground Mount.

<p>NATIONAL OUTDOOR FURNITURE, INC. 1210 W. Main Street #296. Riverhead, NY 11901 Toll-Free Phone: 1-888-663-4621 Phone: 631-369-9099 Fax: 631-207-8312 Email: nofinc@optonline.net www.nationaloutdoorfurniture.com</p>	<p>NATIONAL OUTDOOR FURNITURE, INC. 144 Murdock Road #325 Pomfret Center, CT 06259 Toll-Free Phone: 1-888-516-8873 Phone: 1-860-974-1551 Fax: 516-706-1901 Email: nofinc@earthlink.net www.nationaloutdoorfurniture.com</p>
--	---