



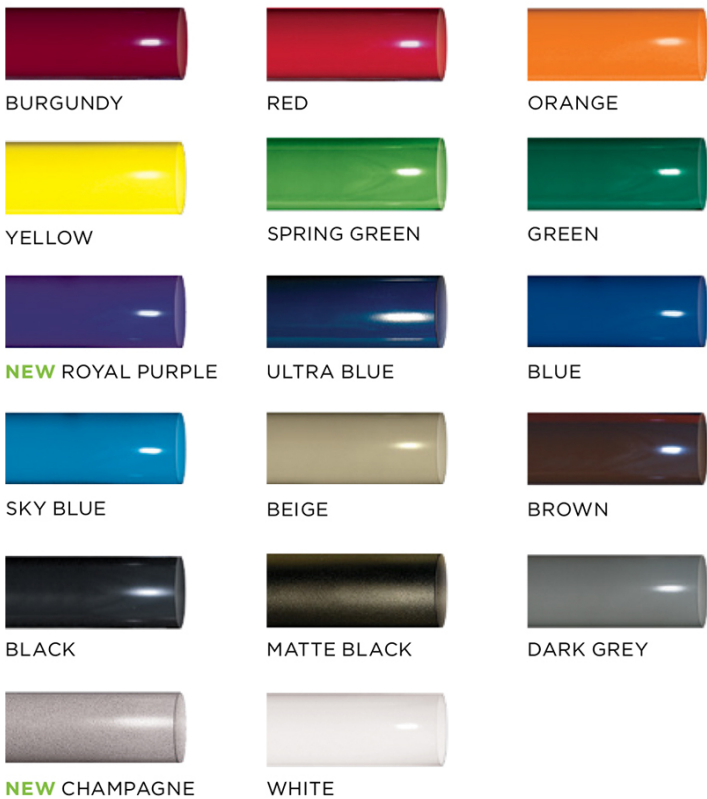
46" Square Kensington Picnic Table.

- 380 Lbs.
- Dimensions: 77"dia. x 30 1/16"Ht. Seats are 18"Ht.
- Slatted table top is 46" square with 36" slats.
- Main support column is 4" x 4" x11" gauge pre-galvanized structural steel tubing.
- Coated with zinc rich epoxy primer and top coated with electrostatic powdercoat, oven cured.
- Holes are predrilled in legs for optional surface mounting.
- All electrically MIG welded.
- All stainless steel hardware.
- Available in inground and surface mount.

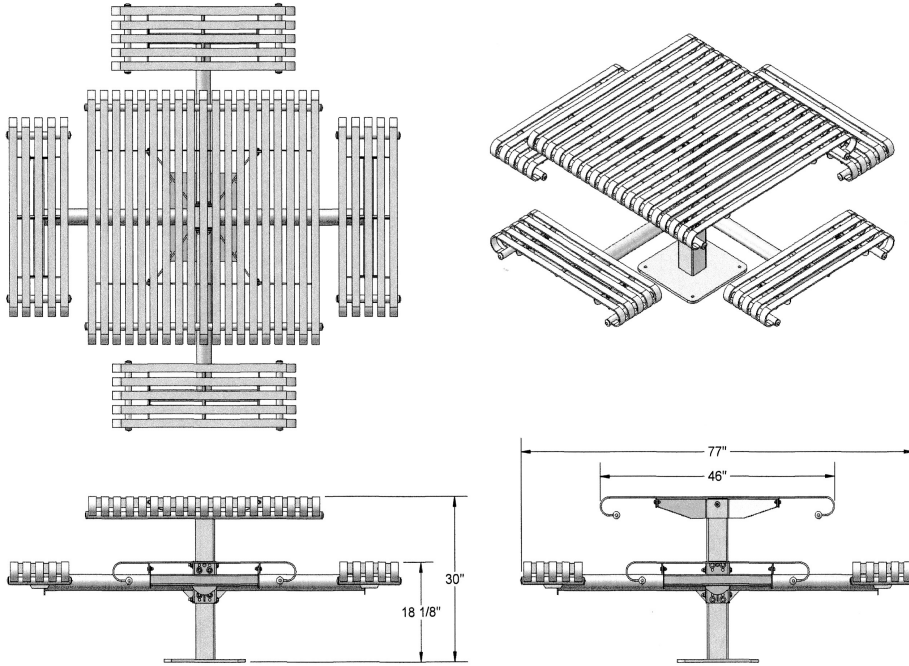
Item #: US 40S

US 40SM-S	46" Square Table, 380 Lbs. Surface
US 40S-S	46" Square Table, 380 Lbs. Inground Mount.

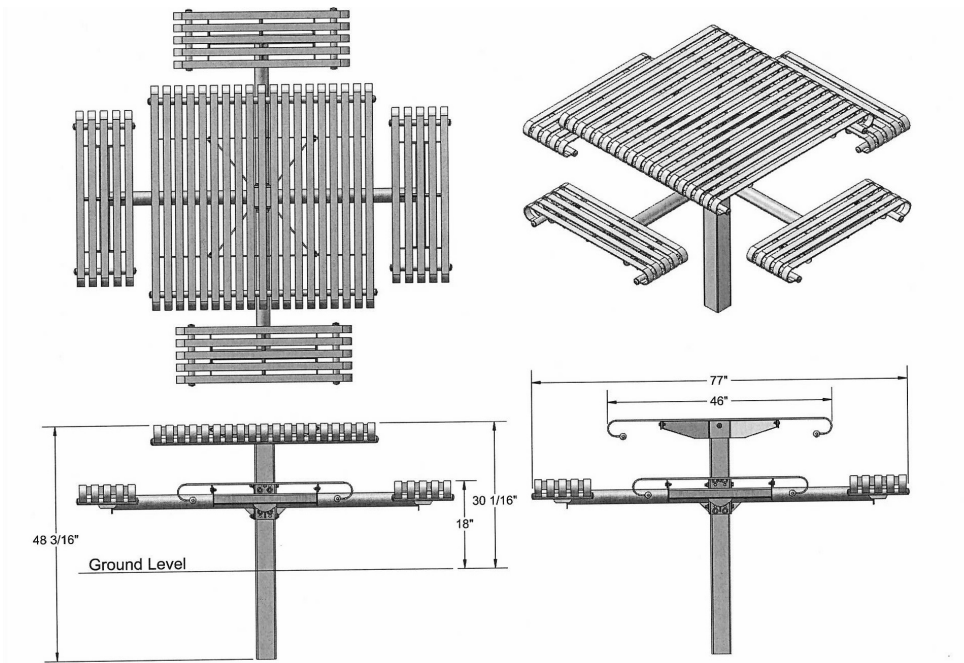
Standard Powder Coat Colors



US 40SM-S



US 40S-S



NATIONAL OUTDOOR FURNITURE, INC.
 1210 W. Main Street #296 Riverhead, NY 11901
 Toll-Free Phone: 1-888-663-4621
 Phone: 631-369-9099 Fax: 631-207-8312
 Email: nofinc@optonline.net
www.nationaloutdoorfurniture.com

NATIONAL OUTDOOR FURNITURE, INC.
 144 Murdock Road #325 Pomfret Center, CT 06259
 Toll-Free Phone: 1-888-516-8873
 Phone: 1-860-974-9996 Fax: 516-706-1901
 Email: nofinc@earthlink.net
www.nationaloutdoorfurniture.com