



**4' Newport Recycled Plastic Bench - Portable/Surface Mount.**

- 120 lbs.
- Dimensions: 48"W x 12"D x 32 1/4"Ht.
- All holes are pre-drilled and countersunk for plastic lumber.
- Includes a UV protectant.
- Legs have surface mounting holes.
- Recycled plastic black frame.
- Stainless steel hardware included.
- Recycled plastic made from 100% recycled material.
- Slats available in cedar, brown, green and gray with black base.
- Some assembly required.

**Item#** JP PB4NEW

JP PB4NEW	4 Ft. Newport Bench, 120 Lbs. 3 Bases. Portable/Surface Mount.
JP PB6NEW	6 Ft. Newport Bench, 130 Lbs. 3 Bases. Portable/Surface Mount.
JP PB8NEW	8 Ft. Newport Bench, 162 Lbs. 4 Bases. Portable/Surface Mount.

## Resinwood Slat Colors



Cedar



Green



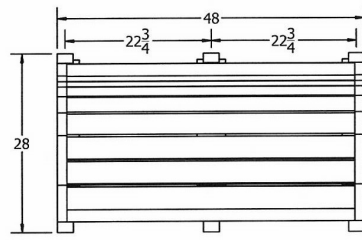
Gray



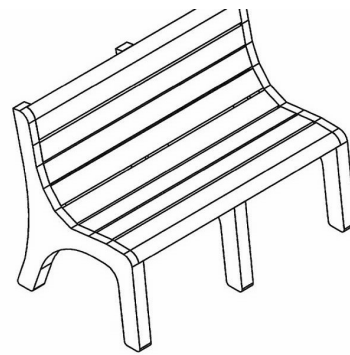
Brown

**NATIONAL OUTDOOR FURNITURE, INC.**  
 1210 W. Main Street #296 Riverhead, NY 11901  
 Toll-Free Phone: 1-888-663-4621  
 Phone: 631-369-9099 Fax: 631-207-8312  
 Email: [nofinc@optonline.net](mailto:nofinc@optonline.net)  
[www.nationaloutdoorfurniture.com](http://www.nationaloutdoorfurniture.com)

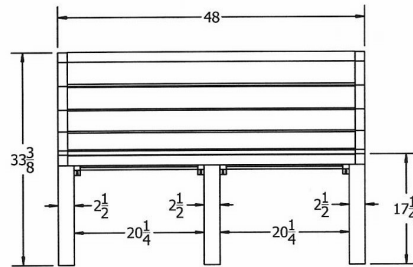
**NATIONAL OUTDOOR FURNITURE, INC.**  
 144 Murdock Road #325 Pomfret Center, CT 06259  
 Toll-Free Phone: 1-888-516-8873  
 Phone: 1-860-974-9996 Fax: 516-706-1901  
 Email: [nofinc@earthlink.net](mailto:nofinc@earthlink.net)  
[www.nationaloutdoorfurniture.com](http://www.nationaloutdoorfurniture.com)



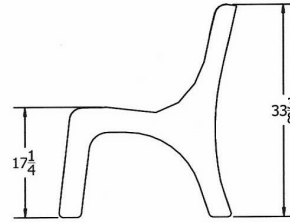
TOP VIEW



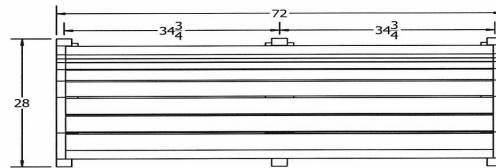
3D ISOMETRIC VIEW



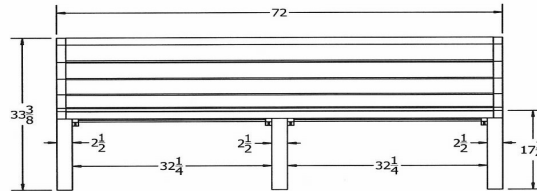
FRONT VIEW



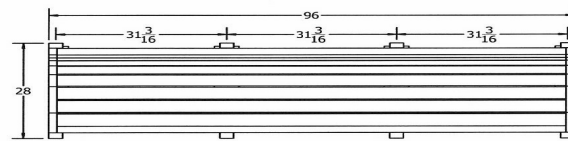
SIDE VIEW



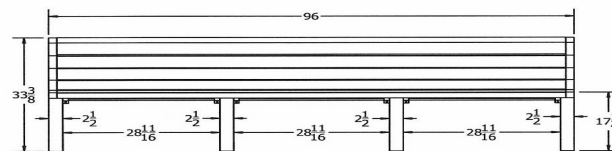
TOP VIEW



FRONT VIEW



TOP VIEW



FRONT VIEW

**NATIONAL OUTDOOR FURNITURE, INC.**

1210 W. Main Street #296 Riverhead, NY 11901  
 Toll-Free Phone: 1-888-663-4621  
 Phone: 631-369-9099 Fax: 631-207-8312  
 Email: [nofinc@optonline.net](mailto:nofinc@optonline.net)  
[www.nationaloutdoorfurniture.com](http://www.nationaloutdoorfurniture.com)

**NATIONAL OUTDOOR FURNITURE, INC.**

144 Murdock Road #325 Pomfret Center, CT 06259  
 Toll-Free Phone: 1-888-516-8873  
 Phone: 1-860-974-9996 Fax: 516-706-1901  
 Email: [nofinc@earthlink.net](mailto:nofinc@earthlink.net)  
[www.nationaloutdoorfurniture.com](http://www.nationaloutdoorfurniture.com)