



Portable



Surface Mount

Boulevard Backless Bench

- 1 5/8" W x 2" Thick Oak or Redwood Slats.
- Seven Gauge Cold Rolled Steel.
- Powder coated steel frame.
- 1/4-20 stainless machine screw, allow drive nut(tamper resistant).
- 2" x 2" sq. tube .095 wall with steel plate and mounting holes.
- Dimensions: 20 1/2" Seat Depth x 17" Seat Ht.
- 4', 5', 6' & 8' lengths available.

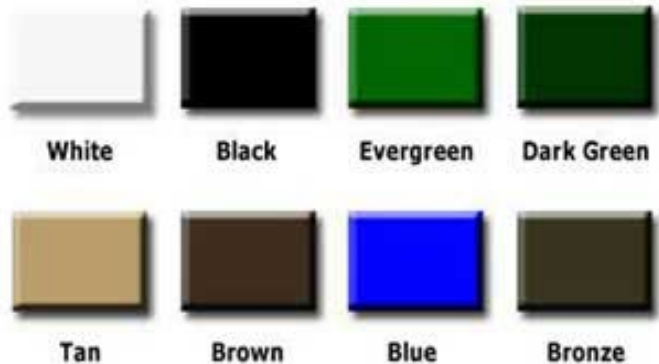
NOF #: KR BB

Model # Size / Slats

KR BB4-R	74 Lbs. 4 Foot-Oak Slats
KR BB4-O	74 Lbs. 4 Ft.-Redwood Slats
KR BB5-R	78 Lbs. 5 Foot-Oak Slats
KR BB5-O	78 Lbs. 5 Foot-Redwood Slats
KR BB6-R	82 Lbs. 6 Foot-Oak Slats
KR BB6-O	82 Lbs. 6 Foot-Redwood Slats
KR BB8-R	100 Lbs. 8 Foot-Oak Slats
KR BB8-O	100 Lbs. 8 Foot-Redwood Slats

Optional armrests.

Powder Coated Finishes

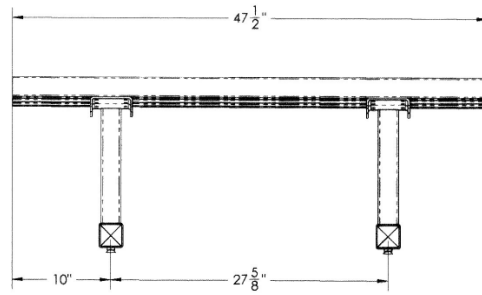
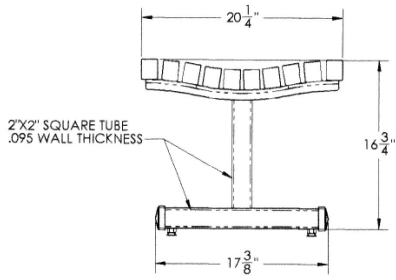


National Outdoor Furniture
1210 W. Main Street #296
Riverhead, N.Y. 11901

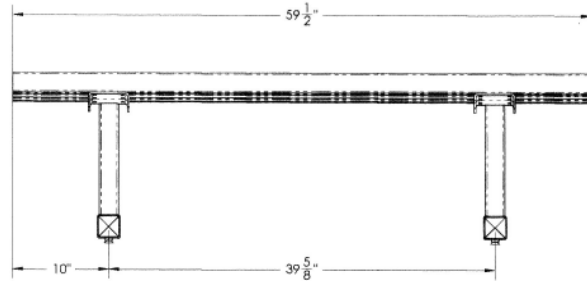
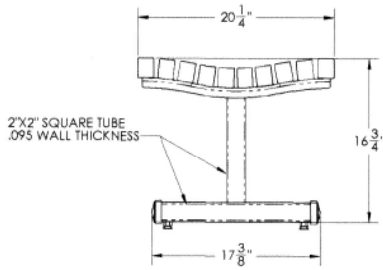
PHONE (888) 663-4621
E-MAIL nofinc1@gmail.com

www.nationaloutdoorfurniture.com

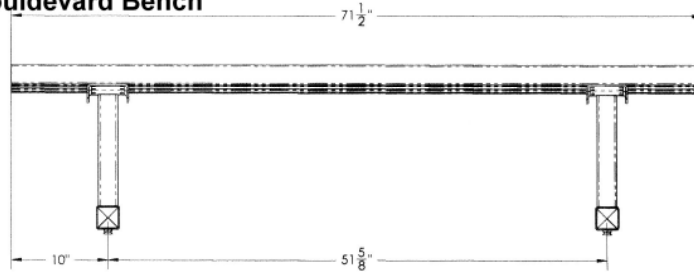
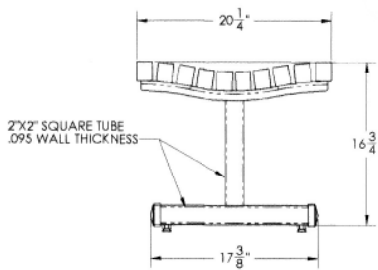
4 Ft. Boulevard Bench



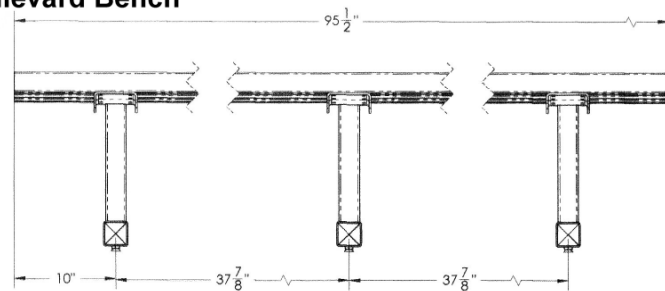
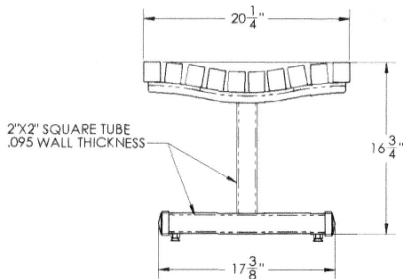
5 Ft. Boulevard Bench



6 Ft. Boulevard Bench



8 Ft. Boulevard Bench



National Outdoor Furniture
1210 W. Main Street #296
Riverhead, N.Y. 11901

PHONE (888) 663-4621
E-MAIL nofinc1@gmail.com
www.nationaloutdoorfurniture.com